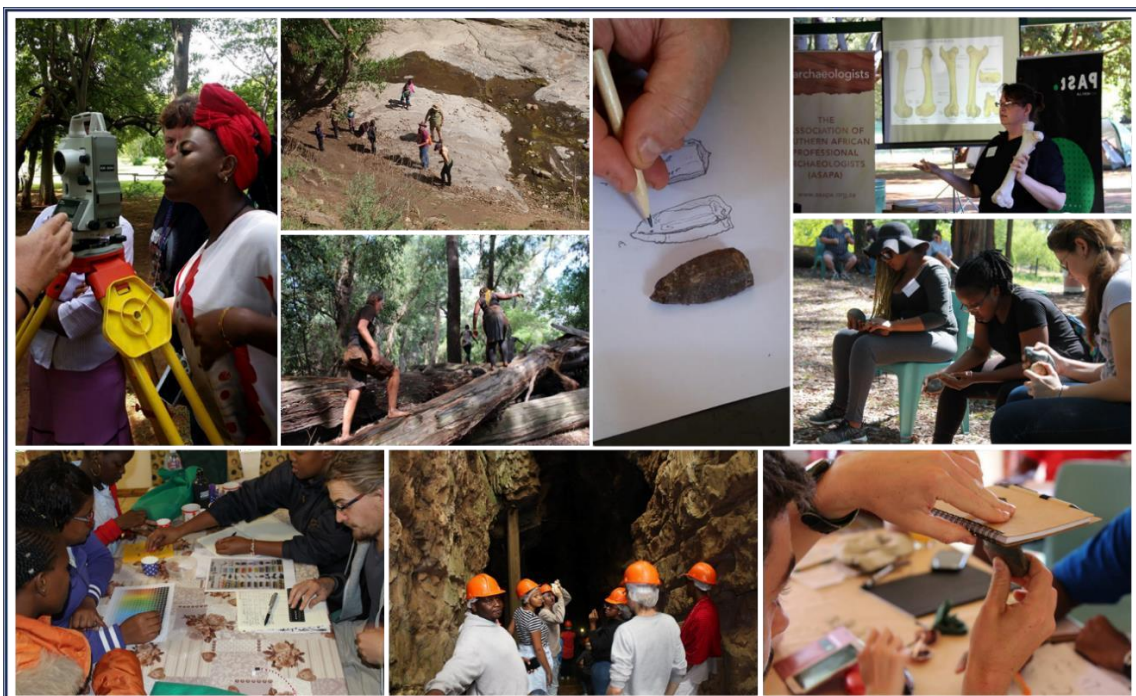


**Southern African Archaeology
Student Society
11th Annual
Student Development Workshop**

Beyond The Crossroads

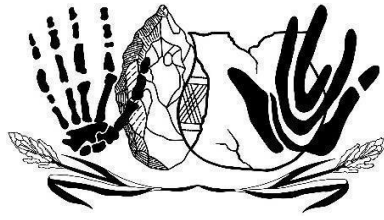


Skukuza Science Leadership Initiative Campus

6-10 December 2025

Table of Contents

Welcome Letter	2
Funders and Sponsors	3
Council Contact Information	4
Workshop Overview	5
Meet your Presenters	12
Blitz Session Presenters	13
Session Descriptions	14
Resources and Materials	18
Campus Venues and Landmarks	19
Accommodation	21
Food and Drinks	21
Packing List	22
Social Media	23
Wi-Fi Access	24
Code of Conduct	25
Health and Safety	27
Feedback	31
Thank You List	32



Welcome Letter

Over the past decade, the Student Development Workshop (SDW) has established itself as an invaluable stepping stone for aspiring archaeologists across the Southern African region. The workshop aims to bring together students from the SADC region to learn critical skills often overlooked in university settings, creating an engaging space where participants can prepare for diverse archaeological careers. The concept for the SDW was born in 2011 when Dr Tim Forssman and Dr Matt Lotter, then students, identified a significant gap in student-focused opportunities during an Association of Southern African Professional Archaeologists (ASAPA) conference. Recognising the need for career preparation and networking, they developed the SDW, held annually since 2013, thanks to generous funding from organisations such as PAST, GENUS, PGS Heritage, and ASAPA.

Through hands-on workshops, insightful discussions, and immersive activities, the SDW has introduced participants to the essential elements for success in archaeology and heritage careers. Beyond academic skill-building, attendees have benefited from unique opportunities to network, fostering a supportive community of future researchers.

The Southern African Archaeology Student Society (SAASS) was founded to represent student needs. Acting as a supportive body, the SAASS Council facilitates skill development and provides a forum for students to voice concerns and explore solutions, strengthening the discipline. Our active social media presence, with over 4979 followers (an increase of nearly 1200 since last year), further connects students and professionals across the field.

The 11th Annual SDW will host 16 SAASS members and six council members. We continue to invite a blend of leading experts and researchers to share their expertise on various topics. This year's programme will focus on careers in archaeology and the relevant skills associated with them. Our workshop also extends beyond archaeology-specific skills, promoting broader engagement through community initiatives that uplift the discipline.

We look forward to welcoming you to this year's SDW at the Skukuza Science Leadership Initiative Campus, Kruger National Park, from 6 to 10 December 2025. Let's make it a week of growth, discovery, and collaboration!

Your sincerely,

Bacara Spruit
SAASS Chair

Funders and Sponsors



We extend our deepest gratitude to our generous funders and sponsors, whose support has made the 11th Annual Student Development Workshop possible. Our heartfelt thanks go to CTS Heritage, GENUS, Skukuza Science Leadership Initiative, PAST, ASAPA, Organization of Tropical Studies, Thulamela Archaeological Research, Letaba Archaeology Project, The KwaZulu-Natal Museum, Ditsong Museums of South Africa, ArchSoc, and the Human Evolution Research Institute.

Your invaluable contributions empower us to continue developing the next generation of archaeologists and heritage professionals. Thanks to your commitment, we can offer meaningful learning experiences, foster vital networks, and equip students with skills essential for their careers. We are incredibly grateful for your dedication to advancing archaeology and heritage in southern Africa.



Council Contact Information

Bacara Spruit

Chair

Bacara.spruit@gmail.com

(+27) 83 234 7488

Justine van Heerden

Event Co-ordinator

Justinevanheerden02@gmail.com

(+27) 76 170 7909

Chanté Barnard

Secretary

chante1999barnard@gmail.com

(+27) 83 570 1776

Ian Tawada Mugowa

SADC Rep

ianmugowa10@gmail.com

(+263) 73 306 9605

Alexandra Pearson

Social Media Co-ordinator

apearson7576@gmail.com

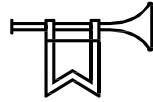
(+27) 83 304 1629

Henry Nakale

SADC Rep

henrynakale@ymail.com

(+264) 81 668 0633



Workshop Overview

Arrivals and Departures

Arrivals

Johannesburg

5 December 2025

You are scheduled to arrive at OR Tambo International Airport by 09:35 am on 5 December 2025. Upon arrival, Henry and Slade will meet Alex Pearson at International Arrivals and then proceed to Domestic Arrivals to collect Kaarina.

Please ensure you remain in contact with Alex once you have landed, particularly if you encounter any delays or difficulty locating the meeting point.

After assembling at the airport, the group will travel to Malelane for the evening. The journey to the event venue will continue on 6 December 2025.

Alex will be driving a grey Kia Sorrento.



Destination	Johannesburg	Location	Time
Driver	Alex Pearson	OR Tambo	9:00
Passenger	Henry Nakale	OR Tambo	9:00
Passenger	Slade Kalenda	OR Tambo	8:40
Passenger	Kaarina Efraim	OR Tambo	9:35
			10:00

6 December 2025

Bacara Spruit will meet Winnie Kereng at OR Tambo International Airport – International Arrivals at 08:30.

Afterwards, they will proceed to meet the second vehicle, driven by **Teaghan Stoop**, at the Engen Garage (Skytop) at OR Tambo.

Those travelling with Teaghan must ensure they are at the Engen Garage no later than **08:30**.

Please note that both vehicles will depart by **08:45**.

Bacara will be driving a white Hyundai Getz and Teaghan will be driving a white Suzuki Jimny.



Destination	Johannesburg	Location	Time
Driver	Bacara Spruit	OR Tambo	8:10
Passenger	Winnie Kereng	OR Tambo	8:10
Passenger	Ian Mugowa	OR Tambo	8:10
			8:45

Destination	Johannesburg	Location	Time
Driver	Teaghan Stoop	OR Tambo	8:15
Passenger	Ginika Ramsawak	OR Tambo	8:15
Passenger	Sinead Watchorn	OR Tambo	8:15
			8:45

6 December 2025

You will depart from Pretoria at approximately **08:45** on 6 December 2025.

After departing, you will travel to the Alzu Petroport on the N4, where you will meet up with **Teaghan** and **Bacara** before continuing onwards to the venue. At Alzu, Ian Mugowa will move to Jaco's car so that there is space for participants being collected in Mbombela.

Jaco will be driving an orange Nissan Micra

Destination	Johannesburg	Location	Time
Driver	Jacobus van der Spuy	Pretoria	8:45
Passenger	Pascal Mutakaya	Pretoria	8:45

Kruger Mpumalanga International Airport

Bacara will collect Welcome and Emma at Kruger Mpumalanga International Airport on 6 December 2025.

Arrival is expected between **13:00 and 13:30**. Please ensure you remain in contact during this time, as Bacara will keep in touch while travelling through to the airport for your pick-up.

Once collected (Bacara, Teaghan, Jaco), we will travel to the venue together.

Destination	Johannesburg	Location	Expected Time
Driver	Bacara Spruit	OR Tambo	NA
Passenger	Winnie Kereng	OR Tambo	NA
Passenger	Welcome Chigwende	Mbombela Airport	13:00
Passenger	Emma Leigh Gibbs	Mbombela Airport	13:00
			13:00

Mbombela

You will be departing from Mbombela at approximately **12:00** on 6 December 2025.

Chanté Barnard will meet Celeste Mandlaze at the **Intercape stop in Mbombela** after picking up Sabelo Masina. Chanté will be driving a blue Hyundai Grand I10.

Justine van Heerden will pick up Kholeka Makhubu, Mahlatsi Mokhabela, and Judah Ramaisha, and meet up with Chanté at **Intercape stop in Mbombela**. The two cars will then depart for Skukuza from there. Justine will be driving a white Renault Duster.

Chanté will pick Thekgo Kgomo up in Hazyview before continuing to Phabeni Gate.



Destination	Mbombela	Location	Time
Driver	Chante Barnard	Mbombela	NA
Passenger	Celeste Mandlaze	15 Samora Machel Drive	11:45
Passenger	Thekgo Kgomo	Engen, Lowveld Mall, Hazyview	13:00
Passenger	Sabelo Masina	Mbombela	11:30

Destination	Mbombela	Location	Time
Driver	Justine van Heerden	Mbombela	NA
Passenger	Judah Ramaisha	Mbombela	11:45
Passenger	Kholeka Makhubu	Mbombela	11:45
Passenger	Mahlatsi Mokhabela	Mbombela	11:45

Departures

10 December 2025

We will depart the venue after breakfast on 10 December 2025. Please ensure you are aware of your allocated vehicle and your drop-off destination, as listed in the Table.

Drivers will confirm final departure times on the morning of travel. Kindly keep in contact with your driver and be ready to leave promptly to ensure smooth onward travel for everyone.

Destination	Johannesburg	Location	Time
Driver	Bacara Spruit	OR Tambo	09:00
Passenger	Slade Kalenda	OR Tambo	09:00
Passenger	Winnie Kereng	OR Tambo	09:00
Passenger	Ian Mugowa	OR Tambo	09:00

Destination	Johannesburg	Location	Time
Driver	Alex Pearson	OR Tambo	09:00
Passenger	Welcome Chigwende	OR Tambo	09:00
Passenger	Henry Nakale	OR Tambo	09:00
Passenger	Kaarina Efraim	OR Tambo	09:00

Destination	Johannesburg	Location	Time
Driver	Teaghan Stoop	OR Tambo	09:00
Passenger	Ginika Ramsawak	OR Tambo	09:00
Passenger	Sinead Watchorn	OR Tambo	09:00

Destination	Pretoria	Location	Time
Driver	Jacobus van der Spuy	Pretoria	09:00
Passenger	Pascal Mutakaya	Pretoria	09:00
Passenger	Emma Leigh Gibbs	Mbombela Airport	09:00

Destination	Mbombela	Location	Time
Driver	Chante Barnard	Mbombela	09:00
Passenger	Celeste Mandlaze	15 Samora Machel Drive	09:00
Passenger	Thekgo Kgomo	Hazyview	09:00
Passenger	Sabelo Masina	Mbombela	09:00

Destination	Mbombela	Location	Time
Driver	Justine van Heerden	Mbombela	09:00
Passenger	Judah Ramaisha	Mbombela	09:00
Passenger	Kholeka Makhubu	Mbombela	09:00
Passenger	Mahlatsi Mokhabela	Mbombela	09:00

Registration Process

Registration for the workshop will take place at the deck next to the Dining Area on 6 December 2025 from 14:00 to 16:00.

Please refer to the attached map for campus directions.

All participants must register during this time to confirm attendance.

Note: For the duration of the workshop, you will be responsible for arriving at the designated venues on time.

Parking Information

Parking for workshop attendees is available on the campus. Assigned parking spots are available next to Tamboti House.

Electricity and Plug Adapters

South Africa uses Type M and Type D plugs (Fig. 1), with Type M being the most common. These plugs feature three round pins in a triangular configuration. The standard voltage is 230V, and the frequency is 50Hz, compatible with most European and Asian devices with proper adapters. Travellers should note that South Africa experiences scheduled power outages, known as load shedding, due to energy supply constraints. It is advisable to carry a power bank and check load-shedding schedules if planning extended stays. Universal adapters and surge protectors can ensure safe use of electronic devices.

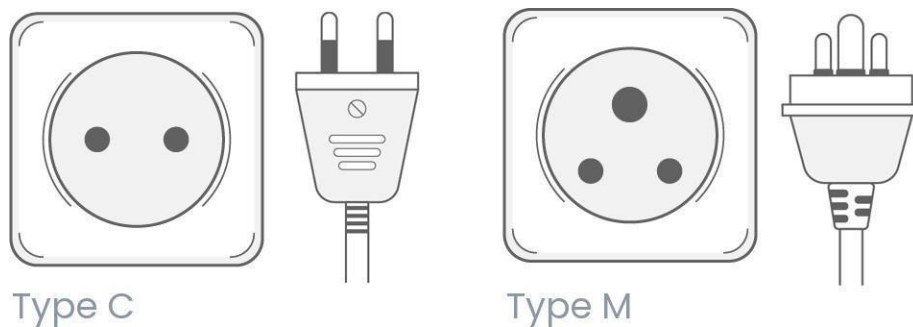


Figure 1: Plug types used in South Africa

SDW 2025 Programme: All sessions will be held at the **Lecture Hall** (unless otherwise indicated)

Time	Saturday (6 Dec)	Sunday (7 Dec)	Monday (8 Dec)	Tuesday (9 Dec)	Wednesday (10 Dec)
07:00-08:00	Arrivals and Registration (Deck next to Dining Area)	Breakfast	Breakfast	Breakfast	Breakfast
08:00-08:30		Surveying w/ Wouter Fourie	Heritage walk w/ Dr Kath & Prof Tim Forssman (meet at GDVs)	Working-In-The-Bush Drive: Safety, Vehicles, and Team members (meet at GDVs)	Departures
08:30-09:00					
09:00-09:30		ArchaeoSkills Pt 1 (CRM) w/ Wouter Fourie	Skukuza Museum visit		
09:30-10:00					
10:00-10:30		Tea	Tea	Tea	
10:30-11:00					
11:00-11:30		ArchaeoSkills Pt 1 (Academia) w/ Prof Tim Forssman and Wouter Fourie	Conservation and archaeology w/ Dr Kath Forssman	Student Blitz Presentations	
11:30-12:00			Archaeotourism w/ Dr Ndukuyakhe Ndlovu		
12:00-12:30			Lunch	Lunch	
12:30-13:00					
13:00-14:00		ArchaeoSkills Pt 2 (Building Your Brand) w/ Dr Laurence Kruger	Panel session: Paths to Working in KNP w/ Drs Forssman, Kruger and Ndlovu	BGM	
14:00-14:30		ArchaeoSkills Pt 3 (Training Stations) w/ Prof Forssman, Wouter Fourie, and Alex Pearson			
14:30-15:00			SAASS Fieldwork Tips and Tricks	Free Time/Pool	
15:00-15:30		Room allocations and campus tour (Deck next to Dining Area)			
15:30-16:00			Ice breakers	Dinner	
16:00-16:30	Dinner				
16:30-17:00		Game Night	Quiz Night		
17:00-17:30	Free Evening				
17:30-18:00		Welcome Dinner	Quiz Night		
18:00-19:00	Game Night			Quiz Night	
19:00 to late		Game Night	Quiz Night		



Meet your Presenters



Wouter Fourie



Tim Forssman



Ndukuyakhe Ndlovu



Kath Forssman



Laurence Kruger



Alexandra Pearson



Justine van Heerden

Blitz Session Presenters

Presenter	Title
Celeste Mandlaze	Creative Strategies to Promote Underwater Cultural Heritage on the Island of Mozambique
Emma Gibbs	The Impacts of Invasive Mice and Climate Change on Marion Island's Vegetation: Evidence from Palaeoecological Analysis
Ginika Ramsawak	The Sediba Project
Jacobus Van Der Spuy	A Forgotten Landscape: A Historiography of the Pafuri Region, Kruger National Park
Kholeka Makhubu	A Use-Wear Investigation of Later Stone Age Hunting Practices at Little Muck Shelter, Middle Limpopo Valley
Pascal Mutakaya	Herding and Hunting in a Time of Turmoil: Bovid Remains from Nkomati, Mpumalanga, South Africa
Sinéad Watchorn	Notched Artefacts: Experimental Testing for an Ancient Wood-Working Industry at Wonderboom
Slade Kalenda	The Intersecting Historical Development of the Rise of Anthropological Research and Archival Services in Colonial Zambia (1930s-1964)
Teaghan Stoop	Re-Evaluation of the Skeletal Position Hypothesis of the Holotype (MH-1) of <i>Australopithecus sediba</i> from Malapa Cave, South Africa
Welcome Chigwende	Beyond Simple Ochre: Modelling Complex LSA Rock Art Emulsions Through Amandebele Ethnography
Winnie Kereng	An Archaeological Analysis of Bone Assemblages from Ntsweng Site in Molepolole, Botswana

Session Descriptions

Saturday, 6 December

Room allocations and campus tour

We will make sure everyone is settled into their rooms and take you on a tour of the SSLI campus including the venues we will be using.

Icebreakers

We will kick off with some fun icebreakers to help everyone get acquainted with each other and our presenters for the week.

Welcome Dinner

Our chair, Bacara Spruit, will officially kick off the workshop with a warm welcome and provide some more information for the week ahead. We will also cover ground rules and essential housekeeping to ensure a smooth experience throughout the workshop.

Game Night

The first day will end off with an evening filled with healthy competition, fun and, obviously, games. Some of our presenters will also be joining in the fun and playing along. Just kidding, they will be there to judge us.

Sunday, 7 December

Surveying

Wouter Fourie

Surveying is an integral method in archaeological fieldwork, thus making this an essential skill in any archaeologist's toolkit. In this session, members will learn about fundamental surveying approaches and techniques from a professional in the cultural resource management (CRM) field.

ArchaeoSkills Part 1: Preparing for A Career in Archaeology (CRM)

Wouter Fourie

This session will include discussions about what CRM is, the day-to-day schedule and responsibilities of a CRM archaeologist, and how you can enter this field of archaeology. Finally, Mr Fourie will discuss how to apply for permits to do archaeological work, clearing up any questions you may have regarding this process.

ArchaeoSkills Part 1: Preparing for A Career in Archaeology (Academia)

Prof. Tim Forssman

Another career avenue for archaeology students and early career professionals is academia. Prof. Forssman will start this session by discussing what an archaeologist in academia does, their responsibilities, and how to enter this field of archaeology. He will then look at specific skills needed when entering academia such as writing funding applications, publishing articles, etc. This session will conclude with a final comparison to highlight the similarities and differences between practicing archaeology in CRM and academia.

ArchaeoSkills Part 2: Building Your Brand

Dr Laurence Kruger

This shorter ArchaeoSkills session will focus on the importance of branding in any field, how students and early career professionals can use branding in archaeology, and how you can build your personal brands to develop your career.

ArchaeoSkills Part 3: Training Stations

Prof. Tim Forssman, Wouter Fourie and Alex Pearson

The final instalment of the ArchaeoSkills sessions will be made up of three Training Stations that provide practical demonstrations of using digital tools (specifically Inkscape), setting up and using a dumpy level, and the basics of photographing in archaeology. You will be split into three groups and rotate between stations every 30 minutes to gain a practical understanding of each of these topics.

SAASS Fieldwork Tips and Tricks

Provided by presenters and SAASS members

The membership of SAASS includes many students and early career professionals that have valuable experience with surveying and excavation—experience that would be beneficial to share with members who have not yet done fieldwork. Prior to the Student Development Workshop, members will be asked to share useful fieldwork tips and tricks for those starting out their archaeology fieldwork journeys. These submitted answers (whether funny or educational) will be shared in this short session to end the first day of the workshop.

Quiz Night

Do you know southern African archaeology trivia and want a rematch after the game night? Come and put your archaeology knowledge to the test with our pub-style quiz night.

Monday, 8 December

Heritage Walk

Dr Kath Forssman and Prof. Tim Forssman

Kruger National Park is a popular tourist destination in South Africa and is exemplary of the type of heritage and conservation research that can take place in a national park. This session will include a Heritage Walk around Skukuza Camp where you will learn more about the history of the Park from a conservation, cultural, political, and social perspective. This history will be highlighted by engaging anecdotes and stories told while touring interesting spots in Skukuza such as the clock tower, ranger's hut, and train station.

Skukuza Museum visit

Prof. Tim Forssman

The museum at Skukuza provides information about the archaeological record of the region (from Bushmen to mining at Ba-Phalaborwa), the establishment of the park, and more current initiatives. This session will include a stroll through the museum and a discussion surrounding the representation of different groups.

Conservation and Archaeology

Dr Kath Forssman

Conservation and archaeology are two fields that regularly cross paths in the context of a national park. In this session, Dr Forssman will discuss the intersections between these two disciplines and how professionals from the two fields can collaborate.

Archaeotourism

Dr Ndukuyakhe Ndlovu

With this year's SDW being hosted in the Kruger National Park, it is essential to take a deeper look at cultural heritage located in national parks and archaeological sites that become tourist destinations (e.g., prominent sites such as Mapungubwe Hill, Masorini Hill, and Thulamela). Dr Ndlovu will lead this discussion about archaeotourism by looking at the connections between archaeology, tourism, and cultural heritage located in national parks.

Panel Session: Paths to Working in KNP

Drs Kath Forssman, Laurence Kruger and Ndukuyakhe Ndlovu

The conservation of heritage is an important factor for many national parks. This panel session, with a series of preset questions, will focus on the career paths of Drs Forssman, Kruger, and Ndlovu as three professionals who work in the Kruger National Park. These discussions will shed light on these different career paths to working in the park.

Public Archaeology

Justine van Heerden

One of the goals of many archaeological research projects is to share their findings and research with the public. The concepts and approaches used in public archaeology and science communication is thus an important topic for archaeology students and early career professionals to become acquainted with. This session will delve into these topics with the help of the HARP Travelling Museum to see how archaeological research projects can connect and collaborate with the public.

Sundowners at Lake Panic

Completely optional, but highly encouraged, is a trip to Lake Panic where we will enjoy scenic views, each other's company and a drink or snack. So, join us if you would like to see hippos chilling under the sunset.

Tuesday, 9 December

Working-In-The-Bush Drive: Safety, Vehicles, and Team Members

Conducting research in a national park can be challenging when things go wrong, and when needing to steer clear of its sharp-fanged or large-tusked inhabitants. This session will include a discussion about how to deal with local wildlife while doing research in the bush, how to manage vehicle problems (such as a flat tire or a dead battery), and how to ensure that conflict between field team members is resolved in a positive manner. These discussion topics will take place at the Stevenson-Hamilton Memorial Lookout. This location also has a few artefacts scattered on the surface and will provide you with an opportunity to apply the skills you learned in the surveying session.

Student Blitz Presentations

Presenting research is an important aspect of archaeological research. The Blitz Presentation session will not only allow our presenters to sharpen their presentation skills, but also provide an opportunity to share research, build connections, and foster future collaborations.

Biennial General Meeting (BGM)

This session is allocated for the SAASS biennial general meeting for members to provide feedback, suggestions, and raise concerns.

Awards Evening and Bush Braai

The closing session will recap event highlights, celebrate achievements, hand out prizes, and acknowledge everyone's contributions. This marks the start of new connections and future collaborations. Thank you for joining us on this journey!

Wednesday, 10 December

We will chow breakfast and say ciao!



Resources and Materials

Please note the following requirements for the workshop:

Essential Equipment

Laptop: We encourage participants to bring a laptop for the practical sessions. Don't worry if you don't have one—we will arrange sharing or alternative solutions to ensure everyone can fully participate.

Software

We strongly recommend downloading and installing these programs before the workshop to avoid delays during the session:

- Inkscape

Additional Requirements

Please come armed with a funny fieldwork story for the Icebreaker session.

We will have a panel session with Dr Kath Forssman, Dr Laurence Kruger, and Dr Ndukuyakhe Ndlovu. All three panel members have done or are doing work in the Kruger National Park related to conservation, research or heritage. The aim of the panel is to take a closer look at these different career paths. Please have a look at their work and come prepared with questions for our panel members.

Workshop Resources

All resources for the workshop events can be accessed through the following link:

[Participant Resources](#)

For any assistance or additional queries, feel free to reach out. We look forward to seeing you at the workshop

SSLI Venues and Landmarks

Deck and Dining Area:



Tamboti House:



Lecture Hall:



Laboratory and Library:



Accommodation

Participants will be staying in Tamboti House. It is a house with a shared kitchen, seating area, and multiple rooms. The rooms have numerous single beds/bunkbeds, and each participant will be provided with bedding. The bathrooms are communal and there will be Wi-Fi. Please remember to bring your own snacks. You will have access to a fridge if you wish to keep anything cool.

Food and Drinks

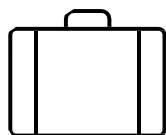
All meals (breakfast, tea, lunch, and dinner) are included during the workshop. Please remember to bring your drinks and snacks as these will not be provided by the venue. We also recommend bringing some cash or a card in case you need to buy something during the week. There are restaurants and shops available in the Skukuza Rest camp, however, access is limited since the SSLI campus is located outside of the Rest Camp. There will be an opportunity to visit the Park Shop on Monday (8 December) after the Skukuza Museum visit for those who want to buy additional drinks, snacks, or toiletries. Please note that the prices of these items are higher than outside the Kruger National Park.

Allergy Notice

We have a nut allergy in the group. Please respect this by avoiding nut products wherever possible, especially in shared spaces, communal meals, or snacks brought for the group.

Your cooperation helps ensure a safe and comfortable environment for everyone.

.



Packing List

Clothing

- Comfortable clothes for practical sessions (e.g., durable trousers, breathable shirts).
- Light jacket or sweater (for variable weather).
- Casual wear for informal sessions (e.g., games night, quiz night).
- Comfortable shoes (essential for walking or standing during excursions and practical workshops. Especially needed for the Heritage walk).
- Hat, sunglasses, and sunscreen.
- Swimming costume and towel.

Accessories and Equipment

- Notebook and pens
- Laptop or tablet
- USB drive or external hard drive
- Water bottle (stay hydrated throughout the workshop).
- Backpack or tote bag (to carry essentials).

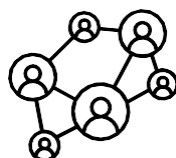
Personal Items

- Travel documents (passport, visa, and travel insurance details – **essential for entering the Kruger National Park**).
- Customs Letter
- Cash or card for personal expenses
- Toiletries, medications (**we cannot provide any medication**) or any personal care items.

Optional Items

- Camera or smartphone (for capturing moments during the workshop or during the Skukuza Museum visit).
- Lightweight raincoat or umbrella (for summer rain).
- Torch

IMPORTANT: Car packing space is limited. Please make sure you do NOT OVERPACK



Social Media

When posting on social media, please remember to tag people (with permission), organisations, or groups relevant to the workshop. Below are the social media handles for funding bodies and sponsorship organisations that contributed to the success of the event.

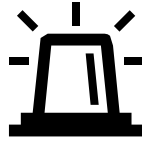
	Facebook	Instagram	LinkedIn
SAASS	Southern African Archaeology Student Society	@saasstudent_society	Southern African Archaeological Student Society
FUNDERS			
GENUS	Genus Palaeosciences 2.0	@genus.palaeo	GENUS (DSI- NRF Centre of Excellence in Palaeosciences)
PAST	PAST	@past_africa	PAST AFRICA
ArchSoc	The South African Archaeology Society	@saarchsoc	
CTS Heritage	CTS Heritage	@cts_heritage	
SPONSORS			
KZN Museum	KZN Museum	@kznmuseum	KwaZulu Natal Museum
HERI	Human Evolution Research Institute	@ heri.uct	
Ditsong Museums of South Africa	Ditsong Museums of South Africa	@ditsongmuseumsa	
Organization for Tropical Studies	Tropical Studies	@tropicalstudies_oet	
ASAPA	Association of Southern African Professional Archaeologists		
Thulamela Archaeological Project		@thulamelaarch	



Wi-Fi Access

Name: SSLI_campus

Password: 5a5b5c5d5e



Code of Conduct

Effective: 6-10 December 2025

*Skukuza Science Leadership Initiative
Campus*

1. Expected Behaviour

Participants of the SDW are expected to:

- Treat all attendees, facilitators, staff, and other individuals with respect, professionalism, and courtesy.
- Foster an inclusive and welcoming environment for all, irrespective of race, gender, sexual orientation, disability, nationality, or cultural background.
- Actively engage in all workshops, discussions, and activities to enhance collective learning.
- Address conflicts constructively and report inappropriate conduct to organisers.

2. Workshop Attendance

- Attendance at all workshop presentations and sessions is mandatory. The workshop is designed to provide valuable skills and networking opportunities, so full participation is required to gain the most from the experience.
- Participants should arrive on time and avoid leaving sessions early unless it is an emergency.

3. Leaving Campus

- Strongly advised: Participants are strongly encouraged not to leave campus during the workshop. This is to ensure both your safety and full participation in workshop activities.
- Leaving campus in the evenings is not allowed.
- The organisers do not take responsibility for any theft, injury, or other incidents that may occur if participants choose to leave the campus.

4. Conduct at the Venue

- Accommodation provided to participants should be treated with respect. Keep

shared

- spaces clean and adhere to any rules outlined by the campus' staff.
- Noise levels must be kept to a minimum after 10 pm in line with park and campus regulations and to ensure others can get adequate rest for the workshop.
- Theft, vandalism, or any form of damage to the residence or other participants' property will not be tolerated.

5. Alcohol and Illegal Substances

- The possession or consumption of illegal substances on campus is strictly prohibited and will lead to immediate removal from the workshop, as well as potential legal consequences.
- Alcohol may only be consumed in designated areas, and participants are required to adhere to all campus and park regulations regarding its use.
- Disruptive behaviour caused by alcohol consumption will result in disciplinary action, including potential removal from the workshop.

6. Health and Safety

- Participants are responsible for their personal belongings and are encouraged to keep valuables secure.
- All emergency exits and routes must be always kept clear. Familiarise yourself with campus safety protocols.
- In case of any medical emergencies, inform the organisers immediately.

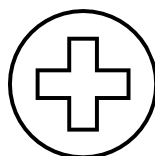
7. Breaches of Conduct

- Any participant found violating this Code of Conduct will be subject to disciplinary action, which may include:
 - Verbal or written warnings.
 - Removal from the SDW event and associated accommodations.
 - Reporting of serious incidents to university authorities or law enforcement if necessary.

Contact Information

For any questions or in the event of emergencies, please contact the organisers at: Email: officialsaasc@gmail.com

Phone: +27 83 234 7488



Health and Safety

1. Introduction

This document provides essential health and safety information for the 11th Annual Student Development Workshop (SDW) at the Skukuza Science Leadership Initiative Campus, Kruger National Park. Please familiarise yourself with the procedures and contacts listed to ensure a safe and smooth event.

2. Emergency Contacts

- Emergency Medical Services: 10177 (Ambulance/Fire)
- General Emergency Number: 112 (mobile networks)
- Police Services: 10111

3. Nearest Medical Facilities

Skukuza Clinic

- Address: Hippo Cir, Skukuza, 1350
- Distance from Venue: 900 m (12-minute walk)
- Contact Number: +27 13 735 5638

Hazyview Primary Care Clinic

- Address: Shop 10 Simunye Centre, Main Street, Hazyview, 1242
- Distance: 55.9 km
- Contact number: +27 13 737 7543

Matikwane Hospital

- Address: Mkhuhlu-C, Mkhuhlu, 1246
- Distance from Venue: 56 km
- Contact Number: +27 13 708 6024

4. Evacuation Plan for Venue

In the event of an emergency such as a fire or other safety hazard, immediate evacuation of the building will be required. Please adhere to the following procedures:

- Evacuation: Head to the nearest emergency exit
- Emergency Exits: Look for the emergency exit signs and head to the closest

emergency exit

- Fire Extinguishers: Located in each venue
- Assembly Point: Once outside, head towards the assembly point under the direction of the council members. Ensure that all members of your group are accounted for.
- Council Members will guide participants to exits and ensure the building is clear. Please follow their instructions.

5. Potential Risks

- Fire: Ensure familiarity with the location of fire exits and fire extinguishers. In case of fire, trigger the nearest alarm and evacuate immediately.
- Medical Emergencies: Contact emergency service list above in the case of medical emergencies.
- Personal Safety: The campus is located in the Kruger National Park. Please be cautious when walking around at night and to not feed any of the animals. Participants are not allowed to leave the campus (on foot or by car) without council members present.
- Slips, Trips, and Falls: Exercise caution on stairs or uneven surfaces.
- Electrical Hazards: Avoid tampering with electrical equipment. In case of malfunction, notify staff immediately.
- Spiders, snakes, and scorpions: Always wear close-toed shoes when walking around at night. Check your shoes before putting them on. Have a torch on hand for the evenings to check your surroundings. If you come across spiders, snakes or scorpions, do not threaten or try to catch them.
- Wild animals: Do not touch, feed or tease any animals you come across on campus. Make sure that you close all doors and cabinets of your accommodation and do not leave food around for monkeys or baboons to find.
- Malaria: Skukuza is located in a malaria area, and the mosquitoes are relentless this time of year. Take malaria medication before attending the workshop and/or bring mosquito repellent.
- Heat: We will be doing some activities outside (especially walking around Skukuza Rest Camp). It is vital that you bring a hat, sunscreen, and water bottle. Remain properly hydrated during the day to prevent dehydration.

6. COVID-19 and Other Health Considerations

- Mask Policy: Masks are optional but recommended for individuals feeling unwell.
- Symptoms: If you experience COVID-19 symptoms (fever, cough, difficulty

breathing), isolate yourself and contact the on-site health officer or the nearest hospital.

7. Health and Safety Procedures

- First Aid: A designated first aid station is available on campus and at the Skukuza Rest Camp Reception. In the case of minor injuries, please report to this station for assistance.
- Severe Weather: In case of heavy storms or extreme weather conditions, any outdoor activities will be paused. Indoor activities will continue unless power is lost.

8. Important Contacts

Position	Name	Contact Number	Email
Chair	Bacara Spruit	(+27) 83 234 7488	Bacara.spruit@gmail.com
First Aid Officer	SSLI Campus	(+27) 84 585 6034	nicolette.davids-petersen@tropicalstudies.org

Please keep this document accessible during the workshop, and don't hesitate to contact a staff member if you have any concerns or require assistance. Stay safe and enjoy the event!

Malaria

Malaria is a serious tropical disease that can be fatal if not diagnosed and treated quickly.

It is caused by Plasmodia parasites and is usually spread through the bite of an infected female Anopheles mosquito. It can also be transmitted through blood transfusions or contaminated needles.

Of the many Plasmodia species, only five infect humans: P. falciparum (the most dangerous), P. vivax, P. ovale, P. knowlesi, and P. malariae.

Malaria is preventable and treatable, but symptoms can range from mild to severe.

Those at highest risk of severe malaria include:

- Infants and children under 5
- Pregnant women and girls
- Travellers
- People living with HIV or AIDS

STOP

Malaria Prevention

Malaria can be prevented by avoiding mosquito bites and by taking the right medicines. If you are travelling to an area where malaria is common, speak to a doctor about preventive medicines (chemoprophylaxis).

Prevention is better than cure!

How to reduce your risk:

- Stay indoors between dusk and dawn when malaria mosquitoes are most active.
- Wear long sleeves, long trousers, and socks at night.
- Use insect repellent with DEET on exposed skin.
- Sleep under an insecticide-treated mosquito net.
- Use indoor insect sprays or plug-in mosquito repellents after closing windows and doors.

Symptoms



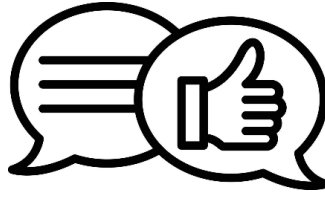
If you live in or travel to an area with malaria, it's important to know the symptoms.

Seek medical help immediately (within 24 hours) if you develop any symptoms — even if you took malaria prevention medicines.

Symptoms usually appear 1–3 weeks after infection, but can sometimes take up to a year or longer.

Common symptoms include:

- Fever (may come and go or stay constant)
- Chills with shivering and shaking
- Sweating after the chills
- Severe headaches
- Nausea and vomiting
- Muscle aches and pains
- Extreme tiredness and weakness
- Occasional dry cough



Feedback

We value your thoughts and input to ensure that the Student Development Workshop continues to grow and improve each year. As such, feedback will be collected using Google Forms and shared with all participants.

How to Submit Feedback

- The feedback form will be sent out via email at lunch on Tuesday, 9 December 2025.
- Participants are encouraged to complete the form by 17:00 on Wednesday, 10 December 2025.

Why Your Feedback Matters

Your responses will help us evaluate the workshop's sessions, logistics, and overall experience to better serve participants in future events.

We appreciate your cooperation in helping us improve the workshop and look forward to hearing your insights.

Thank You List

Presenters

We extend our heartfelt gratitude to the following individuals for sharing their expertise and time to make this workshop a success:

Wouter Fourie, Prof. Tim Forssman, Dr Laurence Kruger, Dr Kath Forssman, Dr Ndukuyakhe Ndlovu, Alex Pearson, and Justine van Heerden.

Sponsors and Funders

This workshop would not have been possible without the generous support of our sponsors and funders:

CTS Heritage, GENUS, SSLI, PAST, ASAPA, OTS, Thulamela Archaeological Research, Letaba Archaeology Project, The KwaZulu-Natal Museum, Ditsong, ArchSoc, and the Human Evolution Research Institute.

SSLI Staff

Special thanks to the staff at the SSLI campus for their invaluable support:

Nicolette Davids-Petersen and Dr Liezl Retief

ASAPA Council

We acknowledge the support and contributions of the ASAPA Council:

Wouter Fourie, Dr Ghilraen Laue, Darya Presnyakova, Nic Wiltshire, Henk Steyn, Jaco van der Walt, Bacara Spruit, Jenna Lavin, Prof. Natalie Swanepoel, Mudzunga Munzhezi, Dr Tammy Hodgkiss Reynard, Prof. Morongwa Mosothwane

Your support and contributions have made this workshop an enriching and memorable experience for all participants. Thank you!